

## Products & Applications: Soldering/Desoldering

>> [Home](#) > [Products & Applications](#) > [Soldering/Desoldering](#) > [SMTC Specialty Tip Cartridges for MX Systems](#)

### MX-500 / SMTC Specialty Tip Cartridges for MX Systems

#### Pad clean-up

Metcal's blade tip cartridges may be used with desolder braid to clean up the pads for both two and four-sided components regardless of the lead configuration or pitch.

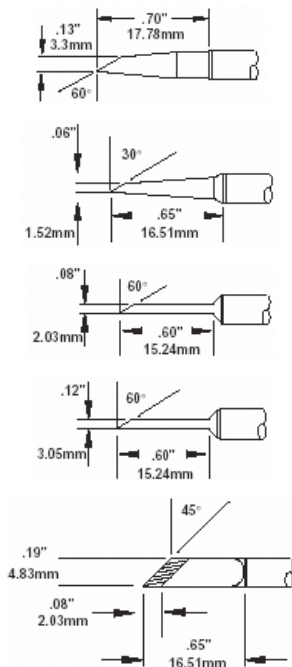
For proper wicking, always use the tip by working with the grain of the pad. Never use a blade to wick by dragging it down the row of pads. The heat combined with the abrasive action may cause the epoxy holding the land to the board to lift the pad.

Choose the size of blade tip that best fits the row of pads. For optimum heat delivery, use the recommended part number below to order.

Blade Tip Cartridges			
SMTC-X110**	SMTC-X62	SMTC-X61	SMTC-X60
Blade	Blade	Blade	Blade
Dual Heater Quad	0.870" (22.10mm)	0.620" (15.75mm)	0.410" (10.41mm)
1.55"	Long	Long	Long

500 series x=5 600 series x=0 700 series x=1 800 series x=8

\*\*=NOT available for 500 or 800 series



#### SMTC-X147\*

Hoof

#### SMTC-X167\*\*

Mini-Hoof

#### SMTC-X169\*

Long Reach Hoof

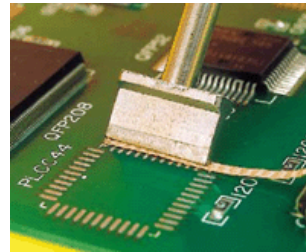
#### SMTC-X170\*

Long Reach Hoof

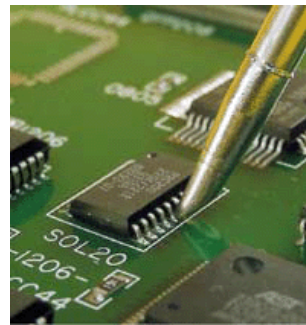
#### SMTC-X161\*

Knife

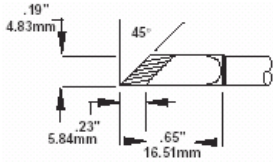
(Tinned Area, .08" 2.03mm)



Metcal's blade tip cartridges in action



Hoof Tip Cartridges for Drag Soldering



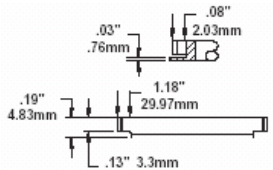
**SMTC-X173**

Knife  
 (Increased Tinned Area,  
 .23" 5.84mm)

500 series x=5 600 series x=0 700 series x=1 800 series x=8

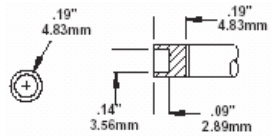
\*=NOT available for 800 series \*\*=NOT available for 500 or 800 series

**Other special tip cartridges**



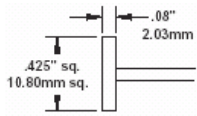
**SMTC-X98\*\***

SMT Connector  
 28 Pin



**SMTC-X100**

Micro XMT  
 Small Package  
 Co-Axial Tip



**SMTC-X136\*\***

Hot Plate  
 .425" sq. (10.8mm sq.)

500 series x=5 600 series x=0 700 series x=1 800 series x=8

\*\*=NOT available for 500 or 800 series

**Multi-lead speed soldering**

Metcal makes special tip cartridges for replacing most component configurations, gull-wing and J-lead, regardless of the number of leads or the lead pitch. We call these multi-lead speed soldering tip cartridges.

For components on boards where access is not a problem, we recommend our SMTC-x147 "hoof" tip cartridge. (This tip cartridge is shaped like a horse's hoof) This tip is designed specifically for "drag soldering" techniques. The face holds just the right amount of solder, and the SMTC-x147 has extra plating where necessary to prevent the failures so commonly seen when using a bent hook to drag solder. Once you have practiced a bit, you will find it is the easiest and fastest way to solder surface mount components.

The "knife" tip (SMTC-x161) is designed for multi-lead soldering of PLCC's in tight spaces. The "mini-hoof" (SMTC-x167) is designed for soldering of either PLCC's or QFP's in tight spaces.

See your local Metcal distributor or representative for a demonstration of these easy techniques.



Hoof (SMTC-x147)



Mini-Hoof (SMTC-x167)



Knife (SMTC-x161)

**Please note:** x = 5 for 500 Series; x = 0 for 600 Series; x = 1 for 700 Series.

Note: SMTC rework cartridges are for use with MX-RM3E soldering/rework handpieces for STSS/MX systems only. They cannot be used with SP systems, Talon handpieces, or desolder handpieces.

© 2009 OK International, All rights reserved.



[Home](#) | [Code of Business Conduct](#) | [Terms & Conditions](#) | [Privacy Policy / Legal](#) | [Site Map](#)  
[Soldering/Desoldering Systems](#) | [Fluid Dispensing Systems](#) | [Advanced Package Rework](#) | [Fume Extraction](#) | [Convection Rework](#) | [Metcal MX](#) | [Soldering Tips](#)